

# WORM SCREW AUTOMATION FOR SWING GATES

# WORM SCREW AUTOMATION FOR SWING GATES



## CARDIN PRO SERIES BL

The automation is made up of a series of components consisting of an installation management programming unit, 1 or 2 worm screw rams and a special connecting cable. The ram, built around a robust structure in cast aluminium, features an efficient motor that works in complete synergy with a high performance reduction unit that is isolated inside a waterproof compartment and is lubricated using permanently fluid grease. The special, well thought out, three piece carter, the rotating screw supported by double bearings and the special drag screw make it a top of the range ram with a unique performance level. It moves silently and fluently and is controlled (via an encoder integrated into the motor) by the programmer supplied with the product.

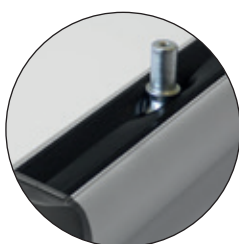
These horizontal action rams are extremely easy to fit without need for brickwork and they offer excellent service in terms of the number of manoeuvres.

Use with the following Cardin programmers CC242ETOPCB, CC242EXTOPCB.

Gate position is encoder-controlled and self-programming thus reducing installation times to a minimum and optimising the programming procedure. Repositioning takes place automatically whenever foreign objects get in the way of the gate as it is moving. The electronic control unit is completed by the anti-crush and "soft start" and "soft stop" functions.

In case of blackouts, emergency manoeuvring is guaranteed by a key-operated manual release mechanism that is efficient under all working conditions.

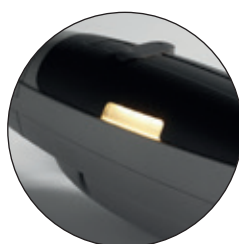
The ram can be fitted with an external lever-operated locking and unlocking system using a remote cord.



WORM SCREW WITH ANTI-DUST PROTECTION



STRUCTURE IN CAST ALUMINIUM



GATE MOVEMENT INDICATOR LEDS



LEVER ACTIVATED MANUAL RELEASE SYSTEM



SELF-PROGRAMMING MONITORED BY AN LCD GRAPHICS DISPLAY

# CARDIN PRO SERIES BL



PRODUCT DESCRIPTION

ORDER NUMBER

## ELECTROMECHANICAL RAM WITH A 24V MOTOR

Self-locking ram controlled by encoder. The geared motor locks the gate leaf in the closed position.

Supplied with all the fittings necessary for mounting one ram including the front and rear brackets in galvanised steel.

ECU to be ordered separately CC242ETOPCB / CC242EXTOPCB.

Standard version for gates with a maximum length of 2,5m, maximum weight 200kg.



## ELECTROMECHANICAL RAM WITH A 24V MOTOR

Self-locking ram controlled by encoder. The geared motor locks the gate leaf in the closed position.

Supplied with all the fittings necessary for mounting one ram including the front and rear brackets in galvanised steel.

ECU to be ordered separately CC242ETOPCB / CC242EXTOPCB.

Long version for gates with a maximum length of 3,5m (4m with an electric lock) maximum weight 300kg.



## BLEGOS



## BLESOL



For the electric locks see page 181.

# CARDIN PRO SERIES BL



ACCESSORY DESCRIPTION

ORDER NUMBER

## OPTIONAL BRACKETS

front and rear brackets in galvanised steel.

BLSTAE



## SELF-PROGRAMMING ECU FOR BLEGOS/BLESOL

Programmer for the management of two encoder-controlled motors.

Power supply 230Vac.

Motor power supply 24Vdc.

Maximum power yield 250W.

Fitted with a multi-decoding module S449-S486-S504-S508.

Compatible with the NTPRG-3G/WF system that allows the monitoring and programming of system parameters from remote positions.

Batteries and a battery charger in the versions CC242ETOPCB and CC242EXTOPCB.

For more information turn to page 190.

Compatible with the data exchange system between digital devices (smartphone, tablet, etc.) and the Cardin multifunctional control units.



See section 24V ECU INTERFACE DEVICES on page 196.

## ELECTRONIC PROGRAMMER

CC242ETOP



## ECU, BATTERY CHARGER AND NIMH BATTERIES

CC242ETOPCB

## ECU, BATTERY CHARGER AND NIMH BATTERIES

CC242EXTOPCB



## KIT BATTERY CHARGER + NIMH BATTERIES

Allows the CC242ETOP unit to work during blackouts.

KBNIMH-1



## 10m CABLE

with end sleeves.

CABPC10

